



# ROYAL CHANNEL ISLANDS YACHT CLUB



## 3<sup>rd</sup> Nick Cousins Memorial SPRING REGATTA

### Saturday 13<sup>th</sup> & Sunday 14<sup>th</sup> April 2024

## Notice of Race (NoR)

Organising Authority (OA): Royal Channel Islands YC (RCIYC)

#### 1. **RULES** – the event is governed by:

1.1. The rules as defined in *The Racing Rules of Sailing* (RRS);

1.1.1. For sportsboat and cruiser/racer classes, RRS 52 (Manual Power) is changed so that, **except when starting**, 'two-handed' boats are permitted to use automatic steering without restriction;

1.2. The Prescriptions of the Royal Yachting Association (RYA) (Ref. [www.rya.org.uk](http://www.rya.org.uk));

1.3. The Post Race Penalty, Advisory Hearing and RYA Arbitration procedures of the RYA Rules Disputes Procedures will apply (Ref. [www.rya.org.uk/racing/racing-rules/racing-rules-guidance](http://www.rya.org.uk/racing/racing-rules/racing-rules-guidance)).  
The outcome of an RYA Arbitration can be referred to a protest committee but an arbitration cannot be reopened or appealed;

1.4. World Sailing (WS) Offshore Special Regulations Category 4 will apply (Ref. [www.sailing.org](http://www.sailing.org));

1.5. For IRC-rated boats:

1.5.1. IRC Rule 2024 parts A,B & C including changes will apply (Ref. [ircrating.org/irc-rule](http://ircrating.org/irc-rule));

1.5.2. For the purpose of IRC Rule 21.1.5(d) the Regatta is on consecutive days and the sails carried shall remain the same throughout save for any replacement duly authorised by the OA;

1.6. Cruiser/racer boats without an IRC Rating will race under the RYA YTC rating system (apply for a rating through <https://www.swytc.org.uk/>);

1.7. Ports of Jersey General Direction 14 (Navigation in Approach Channels) (Ref. [www.ports.je/jerseyharbours/regulationguidance](http://www.ports.je/jerseyharbours/regulationguidance)).

2. **The SAILING INSTRUCTIONS (SIs)** will be posted on [www.rciyc.je/racing](http://www.rciyc.je/racing) and e-mailed to entrants no later than Monday 1<sup>st</sup> April.

#### 3. **COMMUNICATION**

3.1. The Official Notice Board (ONB) is located on [www.rciyc.je/racing](http://www.rciyc.je/racing);

3.2. All boats in the sportsboat, cruiser/racer and F18 sport catamaran classes shall be equipped with an operational marine VHF transceiver;

3.3. On the water, Race Committee Boat A (sportsboat, cruiser/racer & F18 sport catamaran classes) may make courtesy broadcasts to competitors on VHF Channel 8 or an alternative channel to be advised by the Race Committee. Non-reception of any such broadcast by any boat shall not provide grounds for a redress hearing;

3.4. Whilst racing, except in an emergency, a boat shall not make voice or data transmissions and shall not receive voice or data communication that is not available to all boats.

**4. ELIGIBILITY** - The event is open to boats with a valid rating or handicap in the following classes:

**4.1. Sportsboat and Cruiser/racer**

- 4.1.1. Class 0 - Sportsboat - IRC Rating greater than 0.965 <sup>Note 3</sup>
- 4.1.2. Class 1 - Cruiser/racer - IRC Rating equal to or greater than 0.972
- 4.1.3. Class 2 - Cruiser/racer - IRC Rating less than 0.972
- 4.1.4. Class QT - Quarter Ton <sup>Note 4</sup>
- 4.1.5. Class 3a - Cruiser/racer – YTC Rating (spinnaker)
- 4.1.6. Class 3b - Cruiser/racer – YTC Rating (no spinnaker)

**4.2. Dayboat** Class 4 - Jersey Dayboat Handicap (available on application).

**4.3. Small Catamaran (ISCRS)**

- 4.3.1. Class 5 - Rating equal to or less than 1.000
- 4.3.2. Class 6 - Rating greater than 1.000 up to and including 1.250
- 4.3.3. Class 7 - Rating greater than 1.250

**4.4. Dinghy (Portsmouth Yardstick Number)**

- 4.4.1. Class 8 - PN equal to or less than 1210 (tbc) <sup>Note 6</sup>
- 4.4.2. Class 9 - PN greater than 1210 (tbc) <sup>Notes 6&7</sup>

**Notes:**

1 A minimum of **three** entries is required to make a class;

2 Classes may be altered, amalgamated or divided at the discretion of the OA;

3 A Class 0 boat's parameters shall include a DLR less than 150, LH less than 10m and a TCC more than 0.950;

4 To qualify as a Quarter Ton boat, a boat shall have had an IOR rating of 18.5 or less during the period 1970 to 1996. In the case of series production boats only one of the series needs to have had a rating of 18.5 or less;

5. Class flags – each boat in Classes 0, 1, 2, 3a, 3b and QT **will** provide and display her own class flag, flown from the back-stay, shroud or push-pit if no backstay exists. Class flags are numeral pennants 0, 1, 2, 3 and International Code flag Q, respectively. Note: Classes 3a and 3b will race under numeral pennant 3;

6. The combined number of boats in Classes 8 and 9 is, provisionally, restricted to fifty. The OA may adjust this number at its discretion;

7. Class 9 – Subject to the limitation on numbers described in Note 6, entries will normally be accepted from children aged 10 years and above. Exceptionally, entries from younger children with recognised racing experience may be accepted at the discretion of the OA.

**5. ENTRY** - Boats shall enter by completing the entry form on

<https://www.eventbrite.co.uk/o/the-royal-channel-islands-yacht-club-18654642776>

5.1. The cut-off date for entries is Monday 8<sup>th</sup> April;

5.2. Classification - the entry list will be posted on the official notice board no later than Tuesday 9<sup>th</sup> April;

5.3. Parental consent – competitors under 18 years of age may enter by completing both the on-line entry and parental consent forms. Persons-in-Charge who are aged 18 years and above shall provide a parental consent form for any crew member under 18 years of age;

5.4. To be considered an entry in the event, a boat shall complete all entry requirements and pay all fees.

**6. FEES**

**6.1. Entry fees will apply, as follows:**

- 6.1.1. Classes 0, 1, 2, QT, 3a and 3b - £25.00;

- 6.1.2. Classes 4, 5, 6, 7, 8 & 9 - £15 or £10.00 where a boat is to be helmed and crewed by competitors under the age of 18 years throughout the event;
- 6.1.3. Late entry may be accepted up to Thursday 11<sup>th</sup> April in which case late entry' fees will apply, as follows: £35.00 in the case of boats in the cruiser and sportsboat classes and £20 or £15.00 in the case of all other classes.

**Note:** Fees will not be refunded except at the OA's discretion.

## 7. SCHEDULE

- 7.1. Tides: Saturday HW 1018 hours - Ht 10.0m; Sunday HW 1053 hours - Ht 9.0m;
- 7.2. **Classes 0, 1, 2, QT, 3a and 3b** - two races are scheduled for each day. The scheduled time of the first warning signal is 0855 hours, both days;
- 7.3. **Class 5** - three races are scheduled for each day. The scheduled time of the first warning signal is 0925 hours, both days;
- 7.4. **Classes 4, 6, 7, 8 & 9** - three races are scheduled, each day. The scheduled time of the first warning signal for
  - 7.4.1. Classes 6 and 7 is 0855 hours
  - 7.4.2. Class 4 is 1025 hours
  - 7.4.3. Classes 8 and 9 is 1055 hours
- 7.5. No more than one race in a class, not completed on Saturday, may be rescheduled to Sunday;
- 7.6. Sunday 14<sup>th</sup> April – no warning signal will be made after 1600 hours.

## 8. EQUIPMENT INSPECTION

- 8.1. Where not previously provided to the OA, boats in Classes 0, 1, 2, QT, 3a and 3b shall provide a copy of their valid IRC or YTC Rating certificate no later than Monday 8<sup>th</sup> April. No alteration to a boat's rating will be permitted after that date except as a result of a rating protest or to correct a Rating Authority error;
- 8.2. Where applicable, all boats shall comply with RRS 78 (Compliance with Class Rules; Certificates) throughout the Regatta;
- 8.3. Boats may be inspected at any time.

## 9. VENUE

- 9.1. Appendix 1a shows the racing venue excluding marks located outside the vicinity of St Aubin's Bay;
- 9.2. The Regatta Office and social venue are located in the RCIYC.

## 10. COURSES

- 10.1. Classes 0, 1, 2, QT, 3a, 3b & 5 – 'Round the Cans' courses will be set in St Aubin's Bay and Jersey's coastal waters (Ref. Appendices 1a - 1c) and will be contained entirely within Admiralty Chart 2669 (SCF5604.4 and SCF5604.13);
- 10.2. Classes 4, 6, 7, 8 & 9 – courses will be set within St Aubin's Bay (Ref. Appendix 2);
- 10.3. Detailed course information will be provided in the SIs.

- 11. **PENALTY SYSTEM** - For classes 4, 5, 6 and 7 the Two-Turns Penalty is replaced by the One-Turn Penalty. This changes RRS 44.1.

## 12. SCORING

- 12.1. For all classes - all races scheduled for Saturday and Sunday will count towards each day's place prizes, i.e. no result will be excluded;
- 12.2. For the purposes of determining the overall winner in each class, all races completed on Saturday and Sunday will constitute a series for all classes as follows:
  - 12.2.1. Classes 0, 1, 2, QT, 3a and 3b - when fewer than four races have been completed a boat's series score will be the total of its race scores. When four races have been completed a boat's series score will be the total of its race scores excluding its worst score;

12.2.2. Classes 4, 5, 6, 7, 8 & 9 - when fewer than six races have been completed a boat's series score will be the total of its race scores. When six races have been completed a boat's series score will be the total of its race scores excluding its worst score;

12.3. The event will count in the RCIYC 2024 Inshore Championship for cruisers.

**13. DATA PROTECTION** – the use of data provided by an entrant to the OA is subject to the Data Protection (Jersey) Law 2018 (Ref. Policy statement located on the official notice board).

**14. RISK STATEMENT** – RRS3 states that the responsibility for a boat's decision to participate in a race or to continue racing is hers alone. Sailing is by its nature an unpredictable sport and therefore inherently involves an element of risk. By taking part in the event, each competitor agrees and acknowledges that:

14.1. They are aware of the inherent element of risk involved in the sport and accept responsibility for the exposure of themselves, their crew and their boat to such inherent risk whilst taking part in the event;

14.2. They are responsible for the safety of themselves, their crew, their boat and their other property whether afloat or ashore;

14.3. They accept responsibility for any injury, damage or loss to the extent caused by their own actions or omissions;

14.4. Their boat is in good order, equipped to sail in the event and they are fit to participate;

14.5. The provision of a race management team, patrol boats and other officials and volunteers by the event organiser does not relieve them of their own responsibilities;

14.6. The provision of patrol boat cover is limited to such assistance, particularly in extreme weather conditions, as can be practically provided in the circumstances;

14.7. It is their responsibility to familiarise themselves with any risks specific to the venue or this event drawn to their attention in any rules and information produced for the venue or event and to attend any safety briefing held for the event;

**15. INSURANCE** - Each participating boat shall be insured with current third party liability insurance with a minimum cover of £3,000,000 (three million pounds sterling or the equivalent in Euros) per incident, inclusive of racing cover.

**16. PRIZES**

16.1. Place prizes will be awarded in each class, as follows:

16.1.1. When three boats are entered – first and second prizes only;

16.1.2. When four or more boats are entered – first, second and third prizes only;

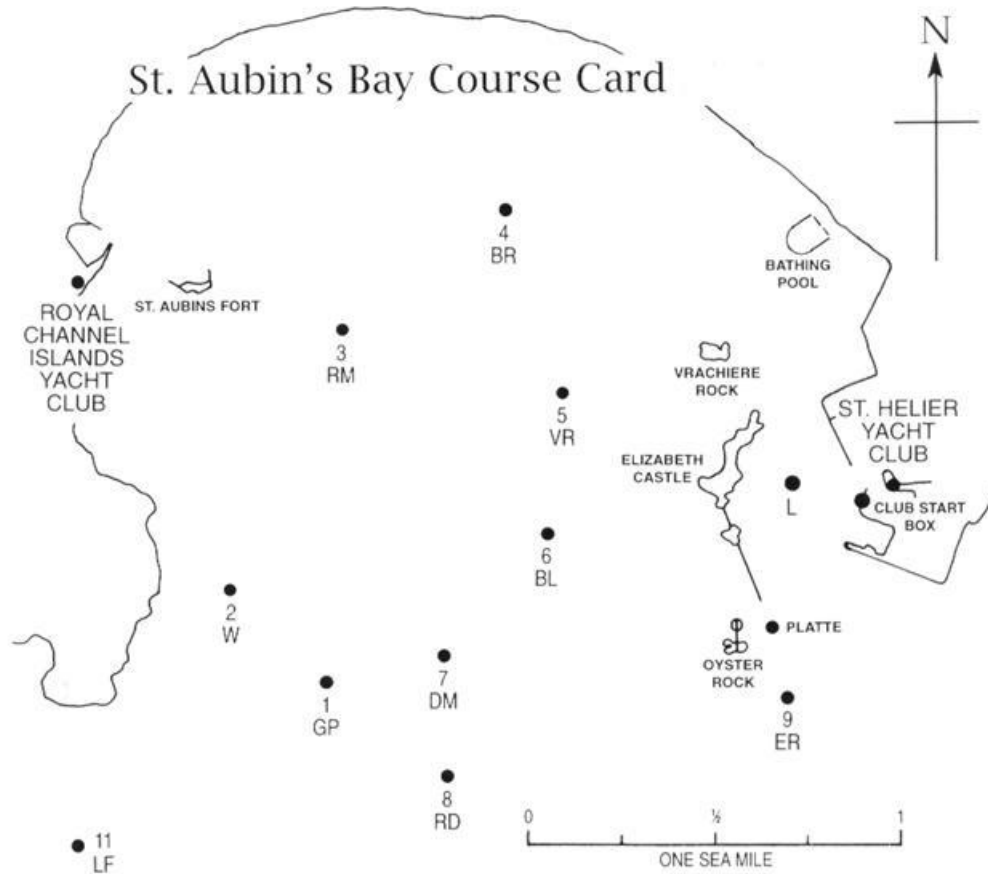
16.2. The presentation of place prizes will take place in the RCIYC as soon as possible after 1930 hours Sunday 14<sup>th</sup> April;

16.3. Supper will be available following the place prize-giving. Further details will be provided in the SIs;

16.4. The presentation of over perpetual trophies will take place at the next RCIYC Annual Prize-giving (date and venue to be advised).

**17. For FURTHER INFORMATION** - please e-mail: [office@rciyc.je](mailto:office@rciyc.je) or call +44 (0) 1534 745783.

Appendix 1a  
 Race venue  
 St Aubin's Bay



**WARNING**  
 Care should be taken to avoid the OYSTER ROCK situated S.W. of the Platte Beacon approx one cable distance

BUOYS, ETC., LISTED BELOW HAVE BEEN ALLOTTED THE FOLLOWING LETTERS & NUMBERS

GRUNES DU PORT BUOY.....1 GP	DIAMOND BUOY.....7 DM
WEST MARK.....2 W	RAUDIERE BUOY.....8 RD
ST. AUBIN'S RACING MARK .....3 RM	EAST ROCK BUOY.....9 ER
BEACH ROCK BUOY.....4 BR	HINGUETTE BUOY.....10 HG
VRACHIERE BUOY.....5 VR	LES FOURS BUOY.....11 LF
BALEINE MARK.....6 BL	LIMIT BUOY ..... L

PARTICIPATING YACHTS SHALL NOT MAKE USE OF THE DEEP WATER CHANNELS IN SUCH A WAY AS TO CAUSE OBSTRUCTION TO LARGE VESSELS USING THE PORT.

## Appendix1b

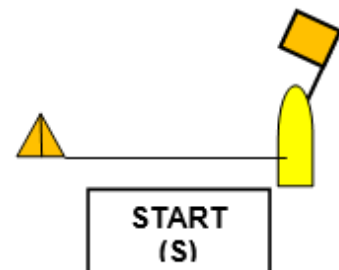
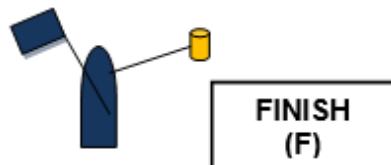
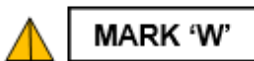
### Marks – St Aubin's Bay & navigational marks

<b>ID</b>	<b>MARKS</b>	<b>Colour</b>	<b>Approximate position</b>
A	Windward mark of a windward/leeward course	Orange	Laid on the day
C	Leeward mark of a windward/leeward course	Orange	Laid on the day
1 - GP	Grunes du Port buoy	Red	49°10.03'N, 02°09.12'W
2 - W	West Mark	Yellow	49°10.220'N, 02°09.393' W
3 - RM	St Aubin's Race Mark	Yellow	49°11.10'N, 02°09.21'W
4 – BR	Beach Rock buoy	Yellow	49° 11.30'N, 02° 08.42'W
5 - VR	Vrachère buoy	Yellow	49°10.94'N, 02°08.10'W
6 – BL	Baleine Buoy	Green	49°10.42'N, 02°08.22'W
7 - DM	Diamond Rock buoy	Red	49°10.12'N,02°08.61' W
8 - RD	Ruaudière buoy	Green	49°09.77'N, 02°08.60'W
9 – ER	East Rock buoy	Green	49°09.97'N, 02° 07.30' W)
10 – HG	Les Hinguettes buoy	Red	49°09.32'N, 02°07.30'W
11 – LF	Les Fours buoy	North cardinal	49°09.60'N, 02°10.18'W
12	Passage Rock buoy	North cardinal	49°09.74'N, 02°12.28'W



## Appendix 2

### Course layout – Classes 4, 6, 7, 8 & 9



Course Nr	(Note: for Classes 7 & 9, the windward mark is Mark A2)								
1	(S)	A	B	C	(F)				
2	(S)	A	B	C	B	C	(F)		
3	(S)	A	B	C	B	C	B	C	(F)
4	(S)	A	D	A	B	C	(F)		
5	(S)	A	D	A	D	A	B	C	(F)
6 (Class 4 only)	(S)	A	W	C	(F)				
7 (Class 4 only)	(S)	A	W	C	B	C	(F)		
8 (Class 4 only)	(S)	A	W	C	B	W	C	(F)	