

ROYAL CHANNEL ISLANDS YACHT CLUB



3rd Nick Cousins Memorial SPRING REGATTA

Saturday 13th & Sunday 14th April 2024

Organising Authority (OA): Royal Channel Islands Yacht Club

Sailing Instructions (SIs)

(All times BST (UTC+1))

1. RULES

1.1. The event is governed by:

- 1.1.1. The rules as defined in *The Racing Rules of Sailing* (RRS);
- 1.1.2. The Notice of Race (NoR).

2. CHANGES TO SAILING INSTRUCTIONS (SIs) - Any change to the sailing instructions will be posted before 0800 hours on the day it will take effect except that any change to the schedule of races will be posted by 2000 hours on the day before it will take effect.

3. COMMUNICATIONS WITH COMPETITORS

- 3.1. Changes to the SIs and other Notices will be posted on the Official Notice Board (ONB) on www.rciyc.je/racing and sent to entrants to the e-mail address provided on each boat's Eventbrite entry form;
- 3.2. The race office is located at the RCIYC; telephone 745783, e-mail: office@rciyc.je;
- 3.3. For the sportsboat, cruiser, Quarter Ton and F18 sport catamaran classes, the race committee intends to monitor and communicate with competitors on VHF radio channel 8. Such communication may include information concerning the course to be sailed and a countdown to and from the warning signal. Non-reception of any message by any boat shall not provide grounds for redress. This changes RRS 62.1;
- 3.4. While racing, except in an emergency, a boat shall not make voice or data transmissions and shall not receive voice or data communication that is not available to all boats.

4. SIGNALS MADE ASHORE

- 4.1. Signals will be made at the RCIYC and repeated at St Helier YC. Signals may, also, be made at the Gun Site Hobie Cat base;
- 4.2. Where a visual signal is displayed over a class flag or class flags it will apply to that or those classes only.
- 4.3. When appropriate, boats will also be advised of any such signal as in Para 3.1, above.

5. SCHEDULE

5.1. Tides: Saturday HW 1018 hrs – Ht 10.0 m; Sunday HW 1053 hrs – Ht 9.0 m;

5.2. Committee Boat A

5.2.1. **Classes 0, 1, 2, QT, 3a and 3b** - two back-to-back races are scheduled for each day. The scheduled time of the first warning signal is **0855 hours**, both days;

5.2.2. **Class 5** – three races are scheduled for each day. The scheduled time of the first warning signal for Class 5 is **0925 hours**, both days;

5.3. Committee Boat B

5.3.1. **Classes 4, 6, 7, 8 & 9** - three back-to-back races are scheduled, each day. The scheduled time of the first warning signal for:

5.3.2. Classes 6 and 7 is **0855 hours**, both days:

5.3.3. Class 4 is **1025 hours** on both days;

5.3.4. Classes 8 and 9 is **1055**;

5.4. Races not completed on either day, for whatever reason, will be abandoned;

5.5. Sunday 14th April – no warning signal will be made after 1600 hours.

6. CLASS FLAGS (Warning Signals)

6.1. Class flags – whilst racing, each boat in Classes 0, 1, 2, 3a, 3b and QT shall provide and display a self-provided class flag to be displayed from the back-stay, shroud or push-pit if no backstay exists. Class flags are numeral pennants 0, 1, 2, 3 and International Code flag Q, respectively. Classes 3a and 3b will race under numeral pennant 3;

6.2. Committee Boat A

Class	Numeral pennant or code flag
0 – Sportsboat	0
1 – Cruiser	1
2 – Cruiser	2
QT – Quarter Ton	Q
3a & 3b– Cruiser	3
5 – F18 sport catamaran	5

6.3. Committee Boat B

Class	Numeral pennant or code flag
4 – Dayboat	4
6 – Sport catamaran	6
7 – Sport catamaran	7
8 – Dinghy	8
9 – Dinghy	9

7. RACING AREA

7.1. Committee Boat A – the racing area will be in St Aubin’s Bay and in coastal waters;

7.2. Committee Boat B – the racing area will be in St Aubin’s Bay.

8. COURSES:

8.1. Committee Boat A

8.1.1. Courses will be set using a combination of numbered fixed marks and, where appropriate, the laid inflatable marks A and C of a windward/leeward course where Mark A is laid to windward and Mark C is laid to leeward of the race committee boat (see Appendix A1). The course area will be contained entirely within Admiralty Chart 2669 (SCF5604.04);

8.1.2. The numbers or letters of the fixed marks and the additional laid inflatable marks will be displayed on a board attached to the committee boat, to be read from left to right;

8.1.3. The background colour of a number will indicate the side on which the relevant mark is to be passed or rounded; green means 'pass or round the indicated mark to starboard'; red means 'pass or round the indicated mark to port';

8.1.4. When included, roman numeral 'II' will mean that a course is to be sailed twice round in which case boats shall sail through the finishing line in the direction of the next mark to commence the second round.

8.2. Committee Boat B

8.2.1. The form of course to be used is shown in Appendix B;

8.2.2. All marks shall be rounded or passed to port.

8.3. Change of the next leg of the course

8.3.1. To change the next leg of the course, the race committee will lay a new mark (or move the finishing line) and remove the original mark as soon as practicable. When in a subsequent change a new mark is replaced, it will be replaced by an original mark;

8.3.2. Boats shall pass between a race committee boat signaling the change of the next leg and the nearby mark, leaving the mark to port and the race committee boat to starboard. This changes RRS 33.

9. MARKS

9.1. For Classes 0, 1, 2, QT, 3a, 3b & 5 - courses set by Committee Boat A will use fixed marks and/or the laid inflatable Marks A and C, as indicated in Appendices A1, A2 & A3;

9.2. For Classes 4, 6, 7, 8 & 9 - courses set by Committee Boat B will use laid inflatable marks as indicated in Appendix B:

9.2.1. Mark A2 applies only to Classes 7 and 9 and is not a mark of the course for classes 4, 6 & 8;

9.2.2. Mark W applies only to courses determined for Class 4;

9.3. A race committee boat signalling a change of course is a mark of the course.

10. THE START

10.1. A boat that does not start within the five minute period following her starting signal will be scored 'Did Not Start', without a hearing. This changes RRS A4 and A5;

10.2. **Committee Boat A**, the starting line will be between a mast or staff displaying an orange flag marking the starboard end of the line and an inflatable Outer Distance Mark (ODM) marking the port end;

10.3. **Committee Boat B (Start)**, the starting line will be between a mast or staff displaying a yellow flag marking the starboard end of the line and an inflatable ODM marking the port end;

10.4. When an inner limit mark is laid, boats shall not pass between that mark and the race committee boat at any time. An inner limit mark will not form part of the starting line transit.

11. THE FINISH

11.1. **Committee Boat A** - the finishing line will be between a mast or staff displaying a blue flag, marking the port end of the line, and an inflatable ODM marking the starboard end;

11.2. **Committee Boat B (Finish)** - the finishing line will be between a mast or staff displaying a blue flag on the finish committee boat, marking the starboard end of the line, and an inflatable ODM marking the port end.

12. TIME LIMIT

12.1. **Classes 0, 1, 2, QT, 3a and 3b** – boats failing to finish within **thirty** minutes after the first boat in their class sails the course and finishes will be scored Did Not Finish without a hearing. This changes RRS 35. A4 and A5;

12.2. **Classes 4, 5, 6, 7, 8 & 9** - boats failing to finish within **twenty** minutes after the first boat in their class sails the course and finishes will be scored 'Did Not Finish' without a hearing. This changes RRS 35, A4 and A5.

13. HEARING REQUESTS

- 13.1. Hearing request forms are available in the RCIYC and on the ONB at www.rciyc.je/racing.
Protests and requests for redress or reopening shall be delivered to the RCIYC or a race official within the protest time limit;
- 13.2. The protest time limit for competitors is 90 minutes after the last boat in the relevant class has finished the last race of the day. The protest time limit for protests by the race committee, protest committee and to requests for hearings for redress is 180 minutes. This changes RRS 61.3;
- 13.3. Notices will be posted in the RCIYC on the ONB as soon as possible after the protest time limit to inform competitors of hearings in which they are parties or named as witnesses. Hearings will be held in the RCIYC;
- 13.4. Notices of protests by the race committee or protest committee will be posted on the ONB to inform boats under RRS 61.1(b).

14. SCORING

- 14.1. The low point scoring system of Appendix A4 will apply;
- 14.2. For classes 0, 1, 2, QT, 3a and 3b – a minimum of two races is required to be completed to constitute the Regatta series;
- 14.3. For classes 4, 5, 6, 7, 8 & 9 – a minimum of three races is required to be completed to constitute the Regatta series;
- 14.4. For classes 4, 6, 7, 8 & 9 – a boat that has not finished and is still within the time limit for that race may be shown International Code Flag 'W' indicating that it will be scored the finishing position that it currently holds. A boat shown the 'W' flag will proceed as quickly as possible to the starting area if a subsequent race is to be held in which it intends to compete;
- 14.5. **In classes 0, 1, 2, QT, 3a and 3b** - a boat's series score will be the total of her race scores excluding her worst score when four races are completed. No score will be excluded when less than four races are completed;
- 14.6. **In classes 4, 5, 6, 7, 8, 9 & W** - a boat's series score will be the total of her race scores excluding her worst score when six races are completed. No score will be excluded when less than six races are completed;
- 14.7. For all classes – all races scheduled for each day will count towards each day's place prizes, i.e. there will be no discard;
- 14.8. The event will count towards the RCIYC 2024 Inshore Class Championships for Classes 1 & 2 and the Hobie Cat Series Championships.

15. SAFETY REGULATIONS

- 15.1. For identification purposes, all boats are to sail in the vicinity of the race committee boat before the warning signal for their first race of the day, keeping clear of any boats currently racing;
- 15.2. A tally system will operate for classes 5, 6, 7, 8 & 9. Boats shall check in with their respective beach master before racing (located at the Gun Site for classes 5, 6 and 7, the RCIYC for classes 8 and 9). **Boats not shown on the tally list or the Race Committee not otherwise advised will be recorded as Did Not Start (DNS);**
- 15.3. Any boat that retires from a race shall endeavour to notify the race committee by any means possible as soon as possible.

16. EQUIPMENT AND MEASUREMENT CHECKS - a boat or equipment may be inspected at any time for compliance with class rules, the Notice of Race and Sailing Instructions. On the water, a boat can be instructed by a race committee equipment inspector or measurer to proceed immediately to a designated area for inspection.

17. OFFICIAL VESSELS

- 17.1. Committee Boat A will display an orange flag to signify that it is on station at one end of the starting line ;

- 17.2. Committee Boat B (start) will display a yellow flag to signify that it is on station at one end of the starting line;
- 17.3. Committee Boat B (finish) will display a blue flag to signify that it is on station at one end of the finishing line;
- 17.4. Guard/mark laying RIBs and other official boats may display a green pennant.

18. PRIZES

- 18.1. Place prizes will be awarded each day in each class, as follows:
 - 18.1.1. When 3 boats are entered – first and second prizes only
 - 18.1.2. When 4 boats are entered – first, second and third prizes only
- 18.2. The presentation of place prizes will take place in the RCIYC as soon as possible after 1900 hours Sunday 14th April (See Social Programme);
- 18.3. Perpetual trophies will be awarded to the boats with the lowest overall score, in their class, and will be presented at the next RCIYC Annual Dinner and prize-giving

19. RISK STATEMENT - RRS 3 states: 'The responsibility for a boat's decision to participate in a race or to continue to race is hers alone.' By participating in this event each competitor agrees and acknowledges that sailing is a potentially dangerous activity with inherent risks. These risks include strong winds and rough seas, sudden changes in weather, failure of equipment, boat handling errors, poor seamanship by other boats, loss of balance on an unstable platform and fatigue resulting in increased risk of injury. Inherent in the sport of sailing is the risk of permanent, catastrophic injury or death by drowning, trauma, hypothermia or other causes.

By taking part in the event, each competitor agrees and acknowledges that:

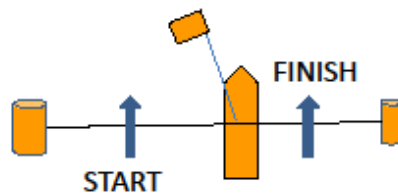
- 19.1. They are aware of the inherent element of risk involved in the sport and accept responsibility for the exposure of themselves, their crew and their boat to such inherent risk whilst taking part in the event;
- 19.2. They are responsible for the safety of themselves, their crew, their boat and their other property whether afloat or ashore;
- 19.3. They accept responsibility for any injury, damage or loss to the extent caused by their own actions or omissions;
- 19.4. Their boat is in good order, equipped to sail in the event and they are fit to participate;
- 19.5. It is their responsibility to familiarise themselves with any risks specific to this venue or this event drawn to their attention in any rules and information produced for the venue or event and to attend any safety briefing held for the event;
- 19.6. The provision of a race management team, patrol boats and other officials and volunteers by the event organiser does not relieve them of their own responsibilities.

20. INSURANCE - Each participating boat shall be insured with current third party liability insurance with a minimum cover of £3,000,000 (three million pounds sterling or the equivalent in euros) per incident; this insurance shall include racing cover.

APPENDIX A1

(Committee Boat A)

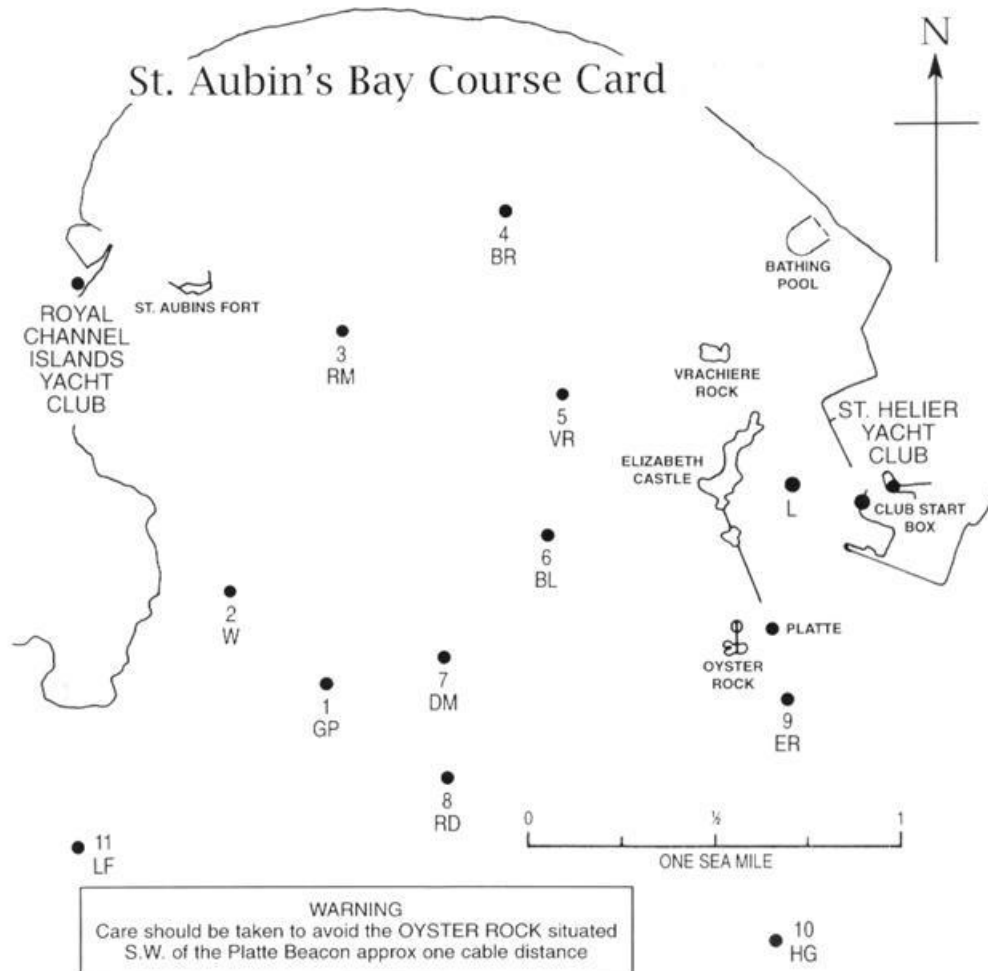
The Committee Boat may lay marks A and/or C or, alternatively, use fixed marks as the windward and/or leeward marks.



APPENDIX A2

(Committee Boat A)

Combined Clubs' Course (Marks) Card



BUOYS, ETC., LISTED BELOW HAVE BEEN ALLOTTED THE FOLLOWING LETTERS & NUMBERS

GRUNES DU PORT BUOY.....	1 GP	DIAMOND BUOY.....	7 DM
WEST MARK.....	2 W	RAUDIERE BUOY.....	8 RD
ST. AUBIN'S RACING MARK	3 RM	EAST ROCK BUOY.....	9 ER
BEACH ROCK BUOY.....	4 BR	HINGUETTE BUOY.....	10 HG
VRACHIERE BUOY.....	5 VR	LES FOURS BUOY.....	11 LF
BALEINE MARK.....	6 BL	LIMIT BUOY	L

PARTICIPATING YACHTS SHALL NOT MAKE USE OF THE DEEP WATER CHANNELS IN SUCH A WAY AS TO CAUSE OBSTRUCTION TO LARGE VESSELS USING THE PORT.

APPENDIX A3

(Committee Boat A)

Marks as specified in Sailing Instruction 9.1

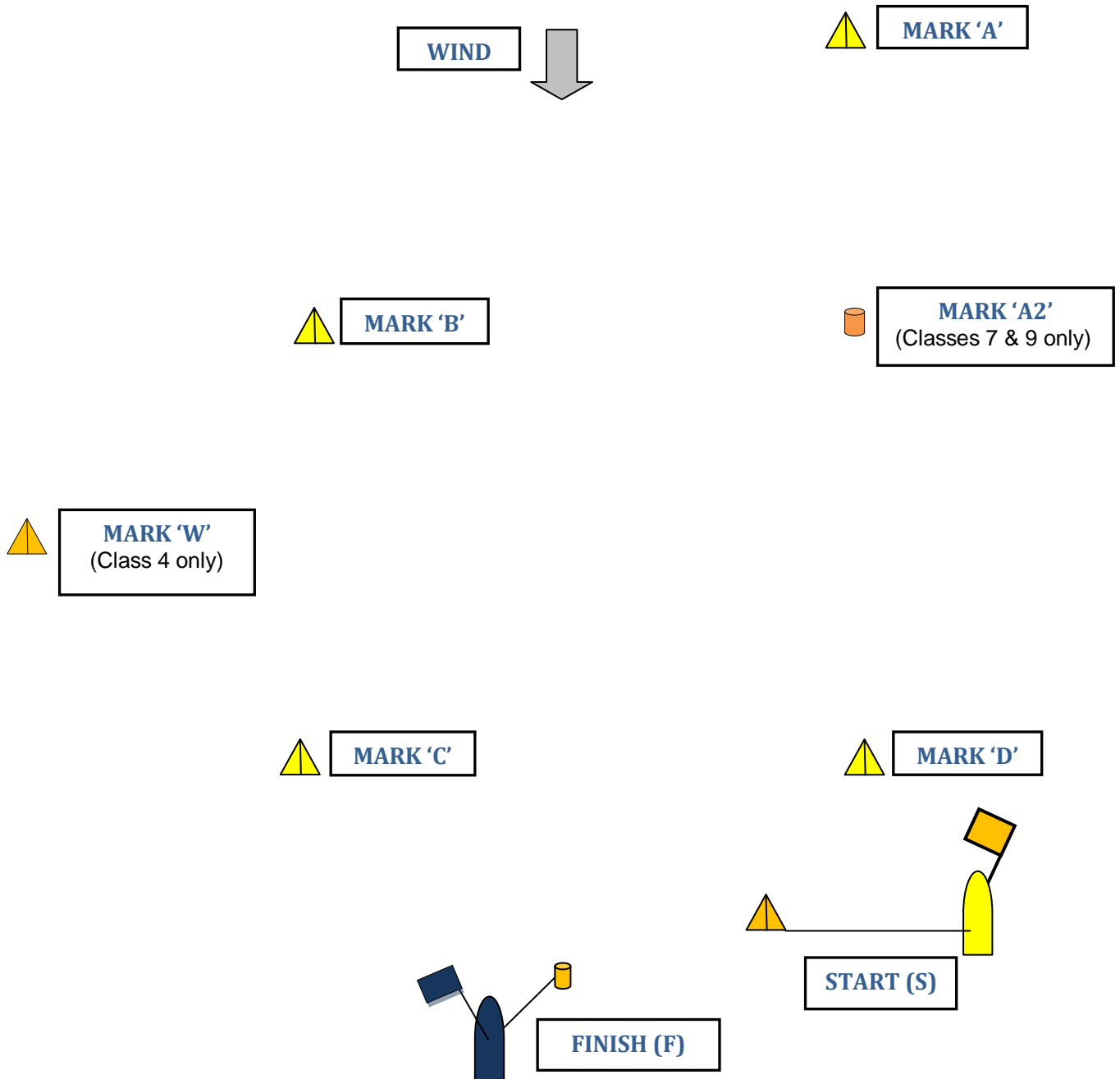
ID	MARKS	Colour	Approximate position
A	Windward mark of a windward/leeward course	Orange	Laid on the day
C	Leeward mark of a windward/leeward course	Orange	Laid on the day
1 - GP	Grunes du Port buoy	Red	49°10.03'N, 02°09.12'W
2 - W	West Mark	Yellow	49°10.220'N, 02°09.393' W
3 - RM	St Aubin's Race Mark	Yellow	49°11.10'N, 02°09.21'W
4 – BR	Beach Rock buoy	Yellow	49° 11.30'N, 02° 08.42'W
5 - VR	Vrachère buoy	Yellow	49°10.94'N, 02°08.10'W
6 – BL	Baleine Buoy	Green	49°10.42'N, 02°08.22'W
7 - DM	Diamond Rock buoy	Red	49°10.12'N, 02°08.61' W
8 - RD	Ruaudière buoy	Green	49°09.77'N, 02°08.60'W
9 – ER	East Rock buoy	Green	49°09.97'N, 02° 07.30' W)
10 – HG	Les Hinguettes buoy	Red	49°09.32'N, 02°07.30'W
11 – LF	Les Fours buoy	North cardinal	49°09.60'N, 02°10.18'W
12	Passage Rock buoy	North cardinal	49°09.74'N, 02°12.28'W

The course area will be contained entirely within Admiralty Chart 2669 (SCF5604.04)

APPENDIX B

Committee Boat B

Course layout – Classes 4, 6, 7, 8 & 9



Course Nr	(Note: for Classes 7 & 9, the windward mark is Mark A2)								
1	(S)	A	B	C	(F)				
2	(S)	A	B	C	B	C	(F)		
3	(S)	A	B	C	B	C	B	C	(F)
4	(S)	A	D	A	B	C	(F)		
5	(S)	A	D	A	D	A	B	C	(F)
6 (Class 4 only)	(S)	A	B	W	C	(F)			
7 (Class 4 only)	(S)	A	B	W	C	B	C	(F)	
8 (Class 4 only)	(S)	A	B	W	C	B	W	C	(F)

SOCIAL PROGRAMME

Friday 12th April

1830 to 2000 hours

Welcoming reception & Briefing – come and enjoy a complimentary drink and collect your Regatta polo shirts. Briefing at 1915 hours.

Saturday 13th April

1900 hours

Complimentary Regatta Supper – please book no later than 1800 hours, Thursday 11th April.

Sunday 14th April

1900 hours

Regatta place prize-giving and buffet.